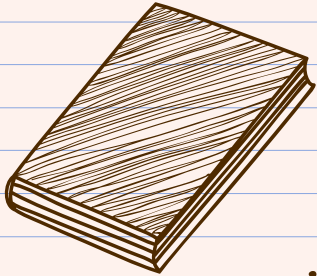


Bal Bharati Public School, Navi Mumbai

Orientation session

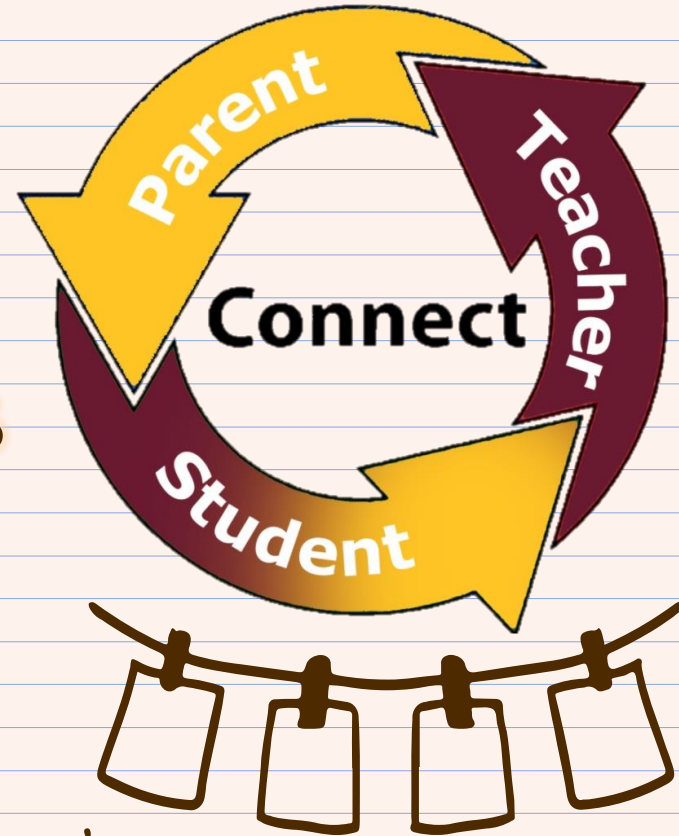
Class 6

(2022-23)



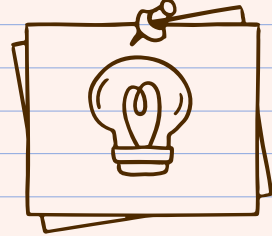
OBJECTIVE

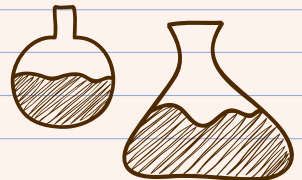
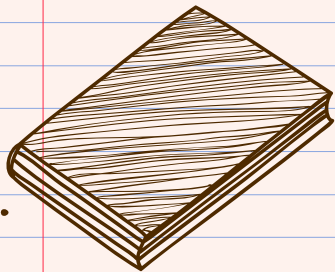
- To understand the changes in syllabus and assessment policy from Class 5 (Primary) to Class 6 (Middle School).





PRAYER!







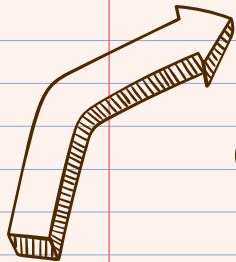
MIDDLE SCHOOL

- Your ward is entering in a new phase of his/her education, and it's a transition.



- Transitions are hard.

- So good Transition strategies can help prevent meltdowns and lower anxiety in children.



ALL ABOUT MIDDLE SCHOOL





Distinct Aspects of Transition Success

- Psychological adjustment
- Self control
- Stressful life events
- Learning motivation

Assessment Structure



The Academic year is divided in two terms :

Term I = 100 Marks & Term II - 100 Marks

TERM 1



PERIODIC TEST 1

: 40 MARKS

(REDUCED TO 10)



TERM 1

: 80 MARKS



INTERNAL ASSESSMENT :



CW, HW & PORTFOLIO

: 5 MARKS



SUBJECT ENRICHMENT
ACTIVITY

: 5 MARKS

(TERM I : $10 + 80 + 5 + 5 = 100$)

TERM 2



PERIODIC TEST 2

: 40 MARKS

(REDUCED TO 10)



TERM 2 / ANNUAL EXAM

: 80 MARKS



INTERNAL ASSESSMENT :



CW, HW & PORTFOLIO

: 5 MARKS



SUBJECT ENRICHMENT
ACTIVITY

: 5 MARKS

(TERM II : $10 + 80 + 5 + 5 = 100$)

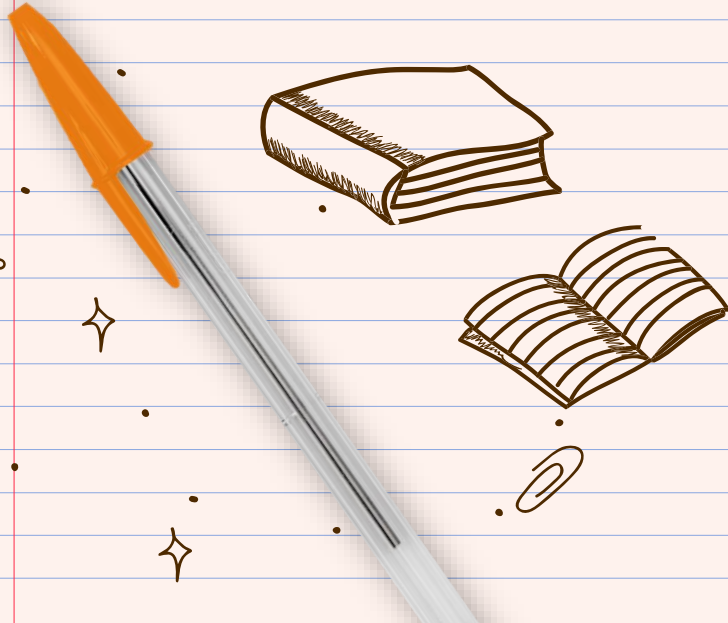
PORTFOLIO

A student portfolio is a
purposeful collection of work
samples from each of the
learning areas that stretch over
a designated period of time.



PORTFOLIO

It may contain work samples from
each learning area, assessment
tasks, photos, student self-
reflection, student learning goals
and more.



SCHOLASTIC SUBJECTS.

English

Marathi

Hindi/
Sanskrit

Social
Science

Mathematics

Science

SCHOLASTIC ASSESSMENT

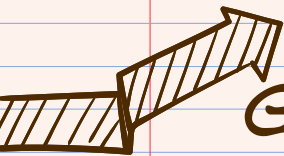
SKILL SUBJECT:



Computer Science



- It will be assessed once in a Term.



GRADING SCALE FOR SCHOLASTIC AREAS (CLASSES 6-8)

MARKS	GRADE
91 – 100	A1
81-90	A2
71-80	B1
61-70	B2
51-60	C1
41-50	C2
33-40	D
32 & BELOW	E (NEEDS IMPROVEMENT)



CO-SCHOLASTIC ASSESSMENT

SUBJECTS:



- Performing/visual art
- Health-physical education
- Work Education

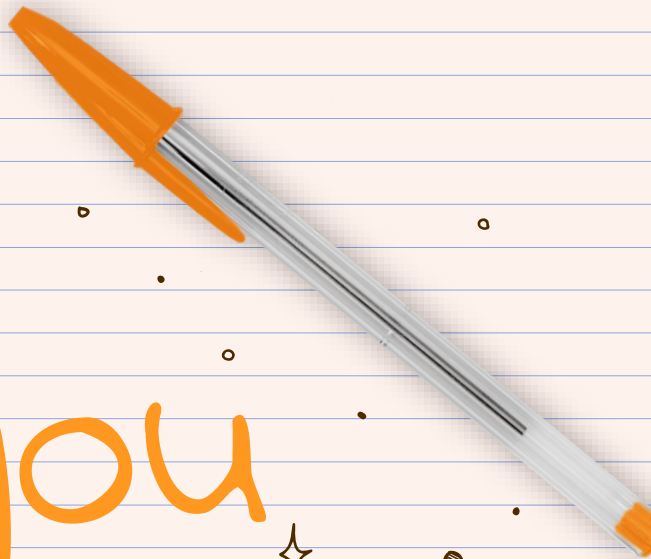
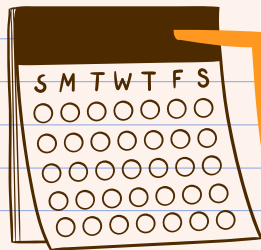


GRADING SCALE

A	OUTSTANDING
B	VERY GOOD
C	FAIR

Rationalized Syllabus.

- NCERT has dropped some topics of Classes 6-8 in an effort to rationalize the syllabus for the academic session 2022-23 to ease the load on students because of Covid 19 disruption in the last two years.
- Subject teachers will inform the students about the same.



THANK you
queries?

